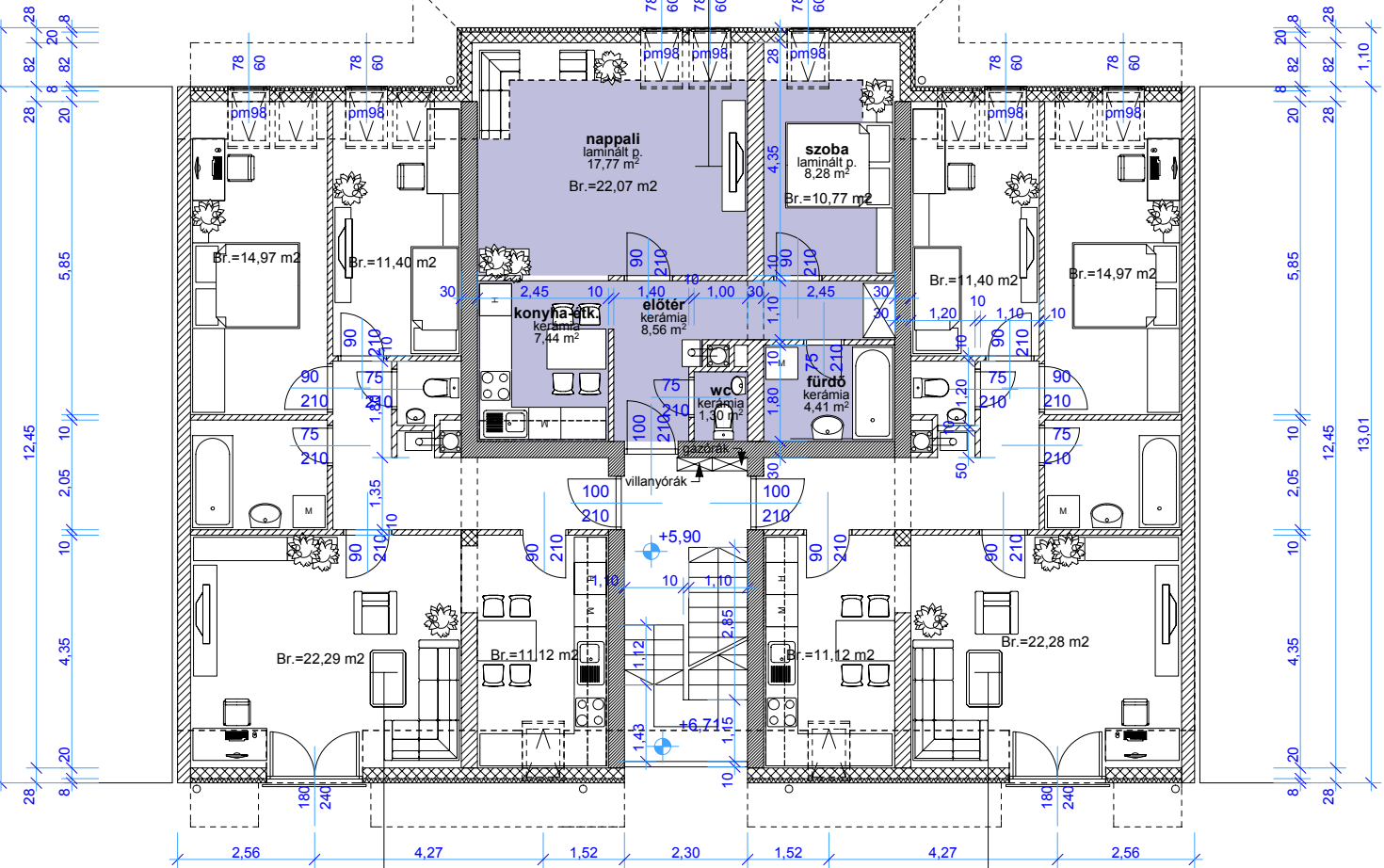
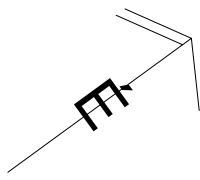


**41/7 lakás:**  
bruttó= 54,55 m<sup>2</sup>  
fizetendő= 51,15 m<sup>2</sup>



**41/6 lakás:**  
bruttó= 75,85 m<sup>2</sup>  
fizetendő= 72,12 m<sup>2</sup>

**41/8 lakás:**  
bruttó= 75,84 m<sup>2</sup>  
fizetendő= 72,11 m<sup>2</sup>

