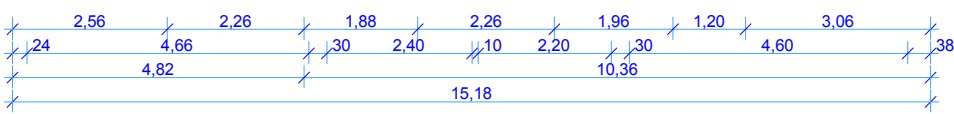
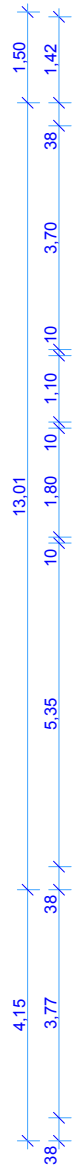
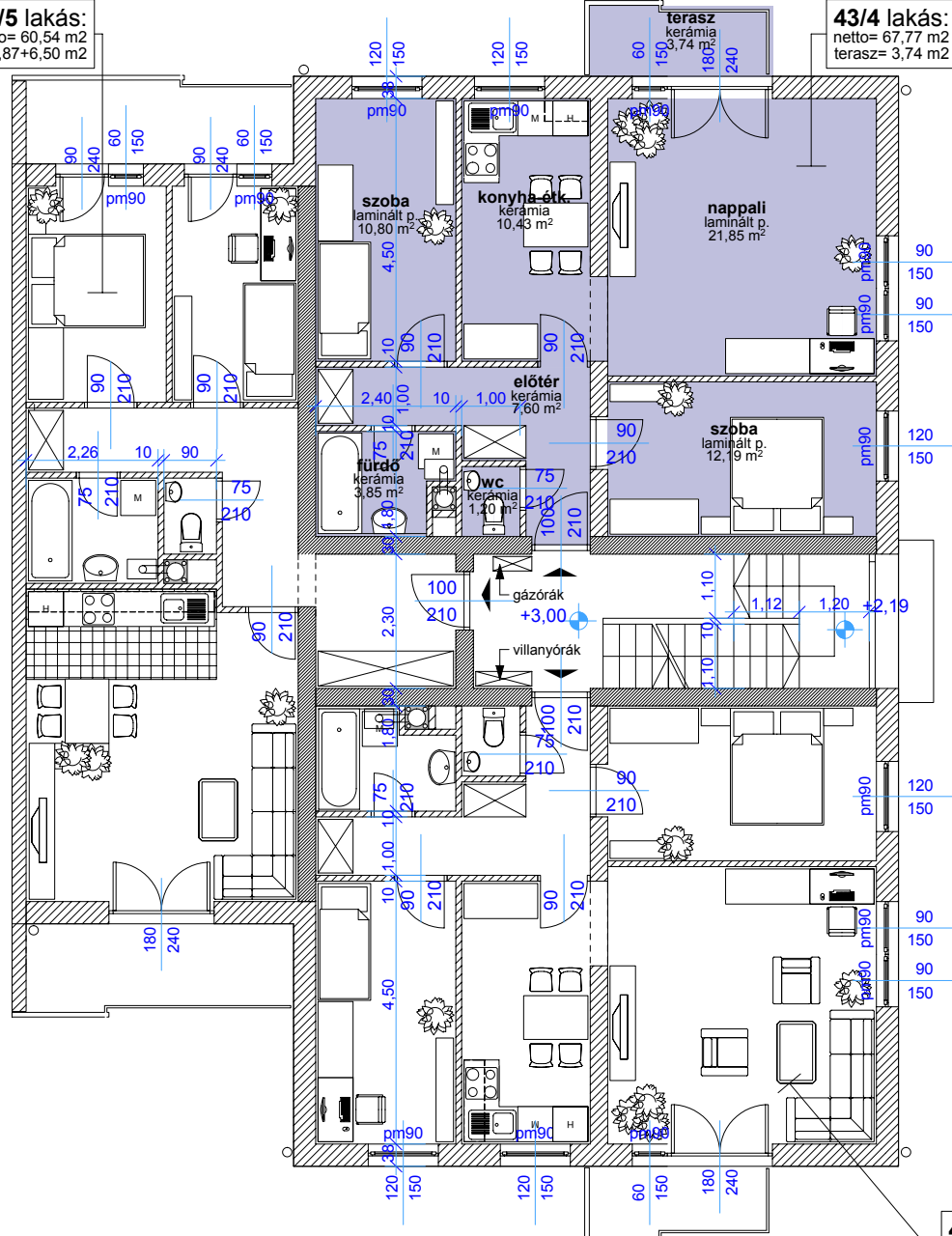


**43/5 lakás:**  
netto= 60,54 m<sup>2</sup>  
terasz= 6,87+6,50 m<sup>2</sup>

**43/4 lakás:**  
netto= 67,77 m<sup>2</sup>  
terasz= 3,74 m<sup>2</sup>



**43/6 lakás:**  
netto= 67,91 m<sup>2</sup>  
terasz= 3,74 m<sup>2</sup>